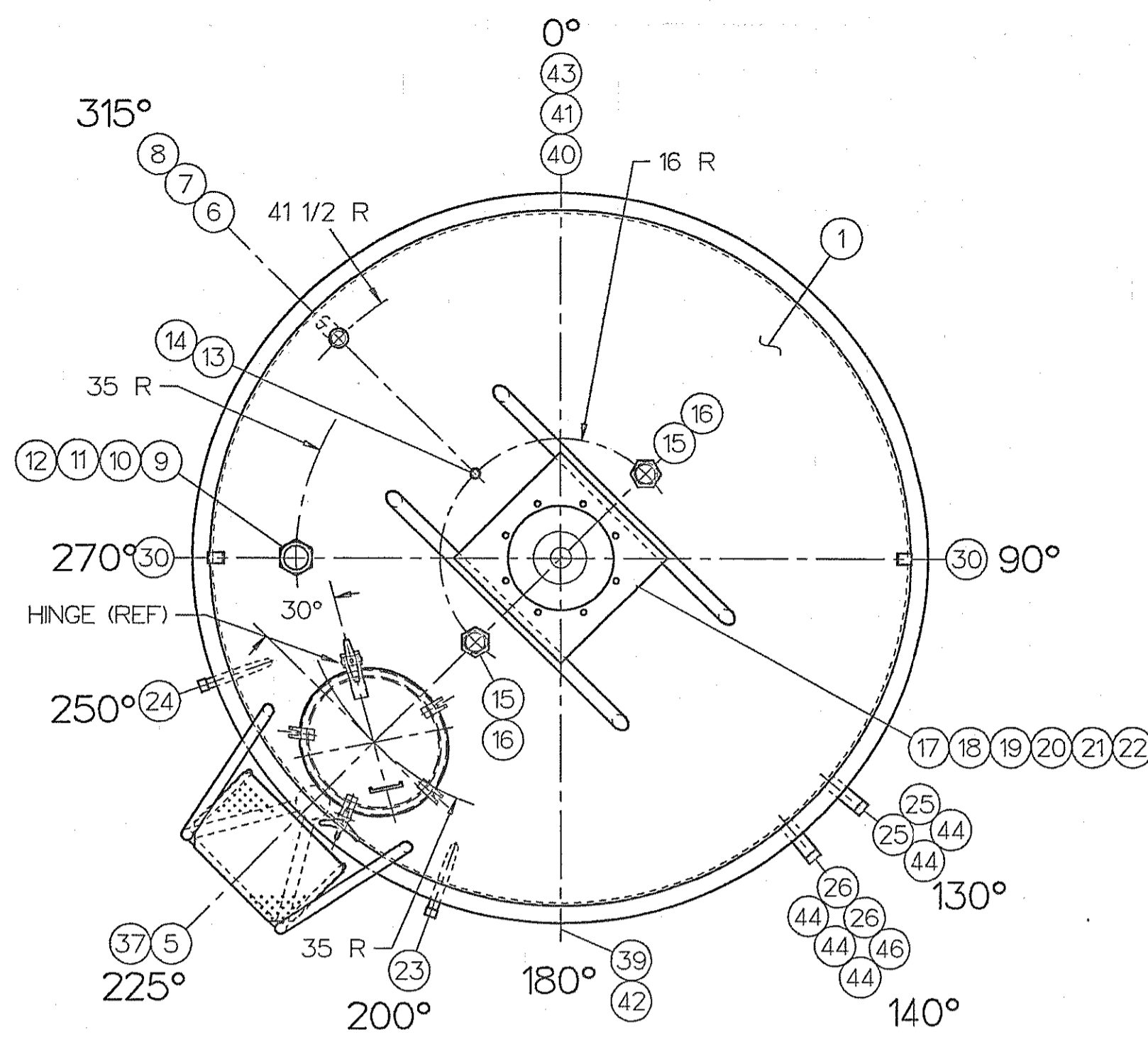
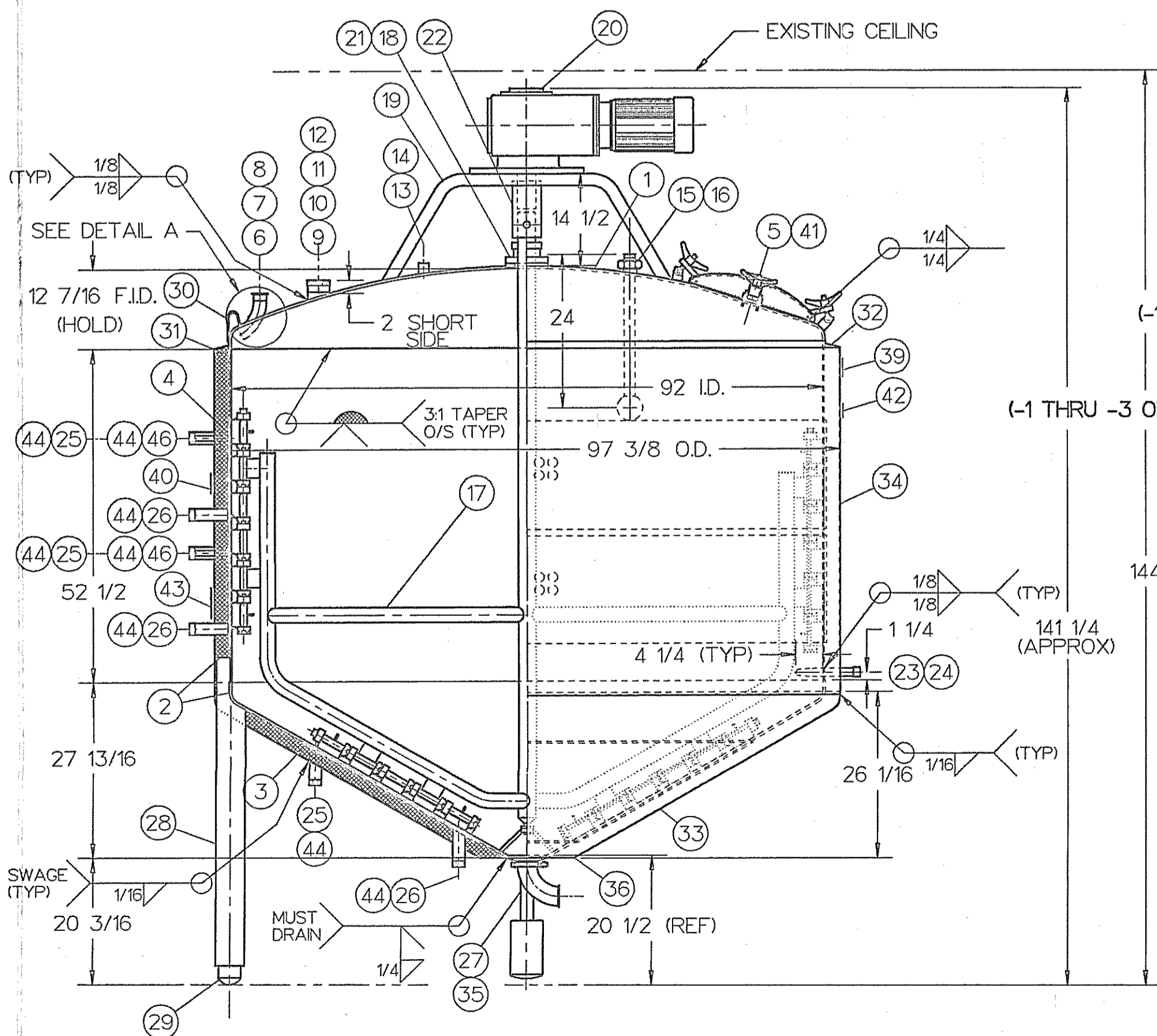


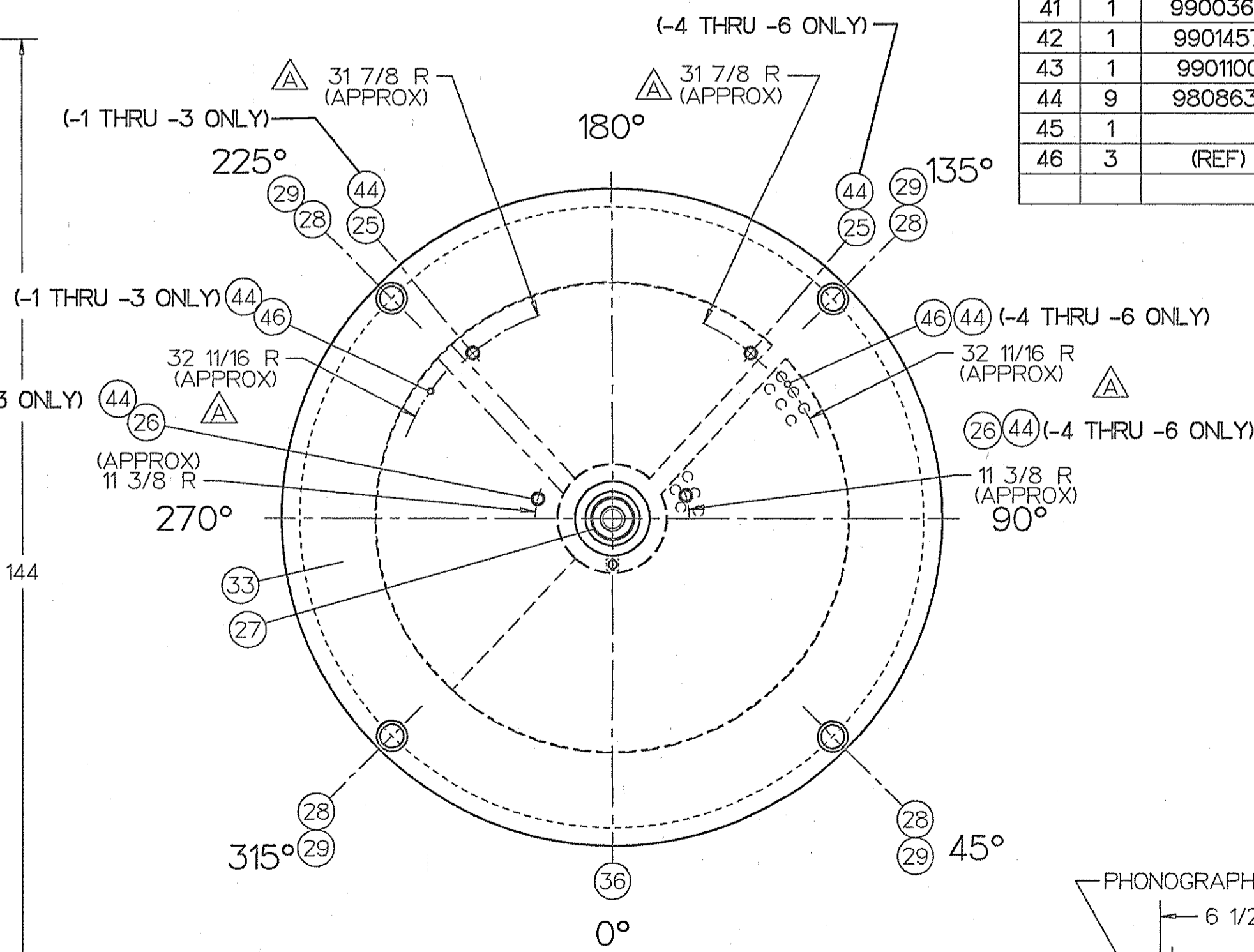
TOP HEAD AND SHELL ORIENTATION FOR TANKS -1 THRU -3



TOP HEAD AND SHELL ORIENTATION FOR TANKS -4 THRU -6



ELEVATION VIEW
SEE TOP & BOTTOM HEAD VIEWS FOR TRUE ORIENTATION



BOTTOM VIEW OF BOTTOM HEAD ORIENTATION

ITEM NO.	NO. REGD	PART NO.	DESCRIPTION	DRAWING NO.
1	1		HEAD TOP SPECIAL F&D 3/8" 304 S/S 115 I.D.R. 2" I.K.R. 1 1/2" S.F.	
2	1		TEMP-PLATE ASSY BOTTOM HEAD & SHELL	FP06053D
3	1	(REF)	BOTTOM HEAD ASSY CONICAL 120° INC. ANGLE 3/8" 304 S/S 2" I.K.R. 1 1/2" S.F.	FP06053D
4	1	(REF)	SHELL ASSY 1/4" 304 S/S W/1/4 GA 304 S/S DIMPLED TEMP-PLATE	FP06053D
5	1	9804076	MANWAY ASSY MC-5 5 LUG 18" DIA 304 S/S *	9500067D
6	1	9900107	FERRULE 14AM7 2.0" 304 S/S 1.125" LG	9000381B
7	1	9901995	ELBOW TUBE BEND 2.0 OD X .065 WALL 304 S/S 90°	9901995A
8	2		FILLER NO FOAM INLET 14 GA 304 S/S	DETAIL A
9	1	9810455	FERRULE 15W 3.000 HEAVY WALL WELDING 304 S/S*	
10	1		EXTENSION PIPE 3" SCH 80 304 S/S (FOR ITEM #9)	
11	1	9900118	CAP 16A 3.0" 304 S/S	9900118A
12	1	9901128	NUT 13H HEX 3" 304 S/S	9901123B
13	1		COUPLING PIPE 1.00 FULL 304 S/S 150# SCREWED (SIM TO 3201038 EXC MACH OUT THREADS ON TANK SIDE)	
14	1		VALVE RELIEF KUNKLE FIG. 266, 15 PSIG, 1" NPT 316 S/S (CONTACT JAN BELL 219-747-1533)	
15	2		DOWN TUBE ASSY OP ADJ W/L5A7 MTG FERRULE FOR KLENZADE SPRAYBALL 304 S/S	9000100C
16	2		SPRAYBALL ASSY KLENZADE SB-1 #9560-2009 (LESS FERRULE)	
17	1		AGITATOR ASSY SIDE & BOTTOM SCRAPE	FP06054D
18	1		FLANGE PAD SPECIAL 3/4" THK 304 S/S	DETAIL B
19	1		TRUSS ASSY SPECIAL SHORT 1 1/2" SCH 40 304 S/S PIPE (FOR KF96 GEARMOTOR)	9000102C
20	1		GEARMOTOR EURODRIVE #KF96DV132M8/4, 5/2.5 HP. @ 13/6.5 RPM 3/60/230V TEFC, POS. VIA, CONDUIT BOX @ 90°	
21	1	9818603	GLAND ASSY FOR 2.750 SHAFT & 3.125 SEAL SIZE (RATED FOR 15 PSIG @ 250°, 15 RPM)	9000616C
22	1	9812214	COUPLING ASSY 2.75 AGITSHAFT 2.875 MOTOR SHAFT	9901039C
23	1	9900984	WELL ASSY THERM 125-18NEF STRAIGHT THREAD 316L 10.125" LG	9900984B
24	1	9900985	WELL ASSY THERM 125-18 NEF STRAIGHT THREAD 316L*	9900985B
25	3	(REF)	CONNECTION TEMP-PLATE 1 1/2" SCH 40 304 S/S PIPE NIPPLE (STEAM IN, WATER OUT)	FP06053D
26	3	(REF)	CONNECTION TEMP-PLATE 1 1/2" SCH 40 304 S/S PIPE NIPPLE (WATER IN, COND. OUT)	FP06053D
27	1		VALVE OUTLET 3" LADISH #262-31AM-3 304 S/S	
28	4		LEG PIPE 4" SCH 40 304 S/S	9000263B
29	4	9800020	FOOT ASSY BALL ADJ FOR 4" 304 S/S SCH 40 PIPE LEG	9000000C
30	2	9900893	LUG LIFTING SGL WALL 304 S/S #4	9000476B
31	A/R	9808680	INSULATION 2" THK INSWOOL ALUMINA SILICA 4# DENSITY CERMAMIC	
32	1		BREAST RING 14 GA 304 S/S	9000582C
33	1		HEAD OUTER BOTTOM CONICAL 120° INC. ANGLE 12 GA 304 S/S 2" I.K.R. 1" S.F.	
34	1		SHELL OUTER 14 GA 304 S/S	
35	1		CLOSURE PLATE 14 GA X 6 3/8" ID. X 14 1/2" O.D. 304 S/S (FOR ITEM #27)	
36	1	9901490	VENT ASSY JACKET	9901490A
37	1		LADDER ASSY W/PLATFORM 304 S/S	GD01972C
38	1	9900377	ENVELOPE ASSY INSTRUCT PROCESSOR & PASTEURIZER	
39	1	3743	PLATE NAME, PROCESS *	
40	1	9803082	PLATE DATA MUELLER *	
41	1	9900362	PLATE CAUTION PRESSURE *CAUTION: THIS VESSEL MUST BE PROPERLY	
42	1	9901457	LABEL 3A 15" DIA *	
43	1	9901100	LABEL CIRCUIT STEAM WATER	
44	9	9808631	LABEL CAUTION USE BACKUP WRENCH. 3" X 2" LABEL, BLUE W/WHITE	
45	1		PERMANENT STAMPED SERIAL NUMBER	
46	3	(REF)	CONNECTION TEMP-PLATE 1/2" SCH 40 304 S/S PIPE NIPPLE (VENT)	FP06053D

- ALL MATERIALS OR COMPONENT PARTS CALLED OUT ON THIS DRAWING SHALL BE AS SPECIFIED OR APPROVED EQUAL.
- DIMENSIONS, UNLESS OTHERWISE INDICATED, ARE NOMINAL AND STANDARD SHOP TOLERANCES ARE TO BE EXPECTED. MEASUREMENTS FOR ANY FIELD ATTACHMENTS SHOULD BE VERIFIED ON SITE BY OTHERS BEFORE FABRICATION OF THE ATTACHMENTS. (ISOP, 23-7)
- F USED IN CONTACT WITH MATERIALS CONTAINING SALT OR OTHER CHLORIDES, THE CORROSION RESISTANCE OF THIS EQUIPMENT IS NOT THE RESPONSIBILITY OF THE PAUL MUELLER COMPANY WITHOUT WRITTEN ACCEPTANCE BASED ON A SPECIFIC SERVICE.
- ALL FLANGES WILL HAVE BOLT HOLES STRADDLE THE 0°-180° & 90°-270° CENTER LINES, UNLESS SPECIFIED OTHERWISE.
- VESSEL TO BE VENTED FOR SHIPMENT.
- ALL DIMENSIONS ARE IN INCHES UNLESS SPECIFIED OTHERWISE.
- ALL WELD SIZES ARE MINIMUM AFTER GRINDING.
- CORROSION ALLOWANCE: 0 INCHES.
- PRODUCT SPECIFIC GRAVITY: 12
- VESSEL DESIGNED FOR WIND LOAD: 0 MPH.
- VESSEL DESIGNED FOR SEISMIC ZONE: 0
- AGITATOR DESIGN BASED ON A PRODUCT SPECIFIC GRAVITY OF 12 AND A MAXIMUM VISCOSITY OF 13,000 CENTIPOISE.
- QUALITY ASSURANCE NOTE:
ALL TANKS WITH VERTICAL AGITATORS ARE TO BE INSPECTED BY ENGINEERING. ALL AGITATORS WITH MECHANICAL SEALS MUST BE FILLED TO PRODUCT LEVEL WITH WATER, PRESSURED TO OPERATING PRESSURE AND RUN A MINIMUM OF 30 MINUTES. ENGINEERING MUST WITNESS AGITATOR OPERATION BEFORE SHIPMENT.
- THIS DRAWING SIMILAR TO PAUL MUELLER CO. W.O. D-32107 DWG. DPO607-D REV. B DATE 6-14-89.
- TAG VESSELS AS FOLLOWS:
 - 1 PT2
 - 2 PT15
 - 3 PT9
 - 4 PT9
 - 5 PT14
 - 6 PT16

MATERIAL FINISHES	
INTERIOR	#4
EXTERIOR	#4

WELD FINISHES	
INTERIOR	MEDIUM FINE GRIND (150G)
EXTERIOR	MEDIUM FINE GRIND (150G)

SPECIFICATIONS VESSEL	
CODE	NONE

RADIOGRAPHY	
Top Head To Shell	NONE
Shell	NONE
Bottom Head To Shell	NONE

HEAT TRANSFER	
CODE	NONE

RADIOGRAPHY	
Top Head To Shell	NONE
Shell	NONE
Bottom Head To Shell	NONE

SIZE (GALLONS) - MODEL	SERIAL NUMBER
1500 "PCPC"	F-41073-1 THRU -6

VESSEL INFORMATION	
DESIGN PRESSURE	15 PS
DESIGN TEMP.	250 °F
HYDRO TEST PRESSURE	0 PS
DESIGN VOLUME	29.92 N.HG.
HEAT TRANSFER INFORMATION	
DESIGN PRESSURE	90 PS
DESIGN TEMP.	400 °F
TEST PRESSURE	157 PS
VOLUME	1.79 CU.FT.
MEDIUM	STEAM / WATER
	SEE NOTE #15

EST. EMPTY WEIGHT - 5350 LBS

SCALE 1/16" = 1" = N.T.S. (DO NOT SCALE THIS DRAWING)

DRAWN BY TL MCKNABB DATE 4-3-92
CHECKED BY RICK HUGHES DATE 4-17-92

APPROVED BY _____ DATE _____

SOLD TO DAISY BRAND INC.
ADDRESS DALLAS, TX

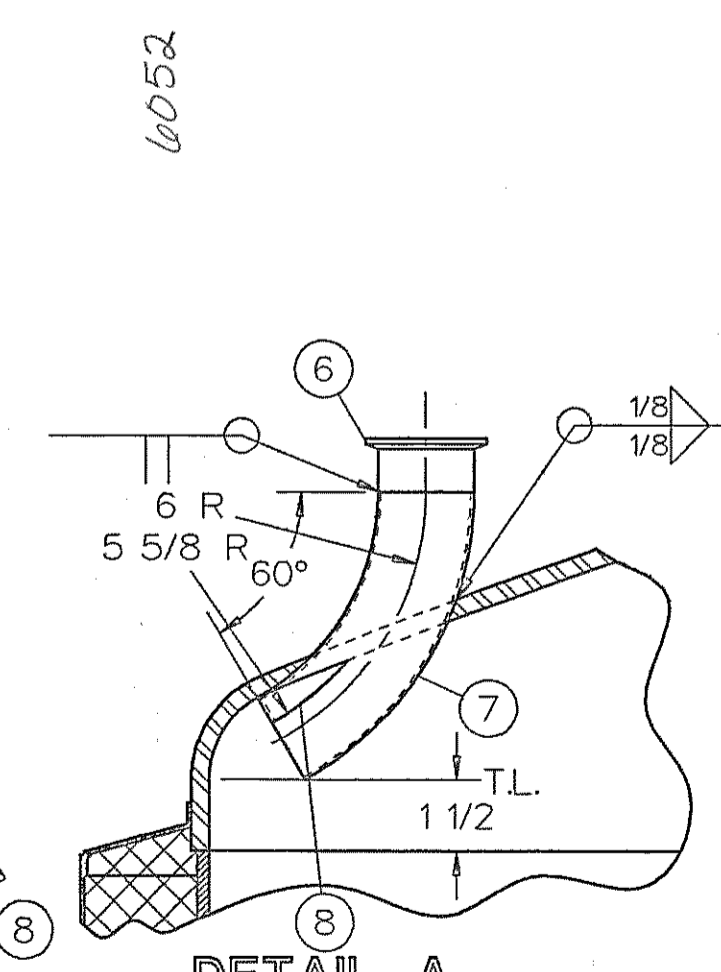
CUSTOMER ORDER NO. 11079

TITLE 1500 GALLON MODEL "PCPC" PROCESSOR
QUANTITY SIX

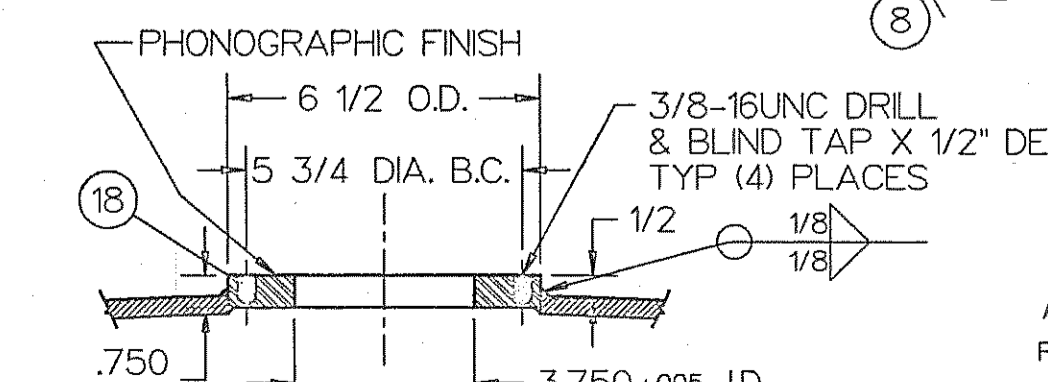
This drawing and any print thereof is the property of the PAUL MUELLER CO. Springfield, Mo., and is subject to return on request of this company. The information shown is confidential and the recipient by accepting this drawing agrees not to use any information contained thereon in any manner which will be detrimental to the PAUL MUELLER CO.

PAUL MUELLER COMPANY
P. O. BOX 828 / SPRINGFIELD, MISSOURI, USA 65801
TELEPHONE: (417) 833-3000 / CABLE: MUELLER
TELEX: 43-6427

SALES ORDER & SERIAL NO. F-41073-1 THRU -6
DRAWING NO. FP06052 D



DETAIL A



DETAIL B

REV	REVISIONS	BY	DATE
C	REVISE ORIENTATION PER CHANGE ORDER	TTT	5-21-92
B	ADD INFO @ ITEM #14*	TLM	4-28-92
A	ITEM #4 WAS W/1/4 GA TEMP-PLATE. TEMP-PLATE VOLUME WAS 126. 31 7/8 R WAS 33. 32 11/16 R WAS 33 1/8*	TLM	4-21-92

SEPIA FROM DPO6052
DPO6017